

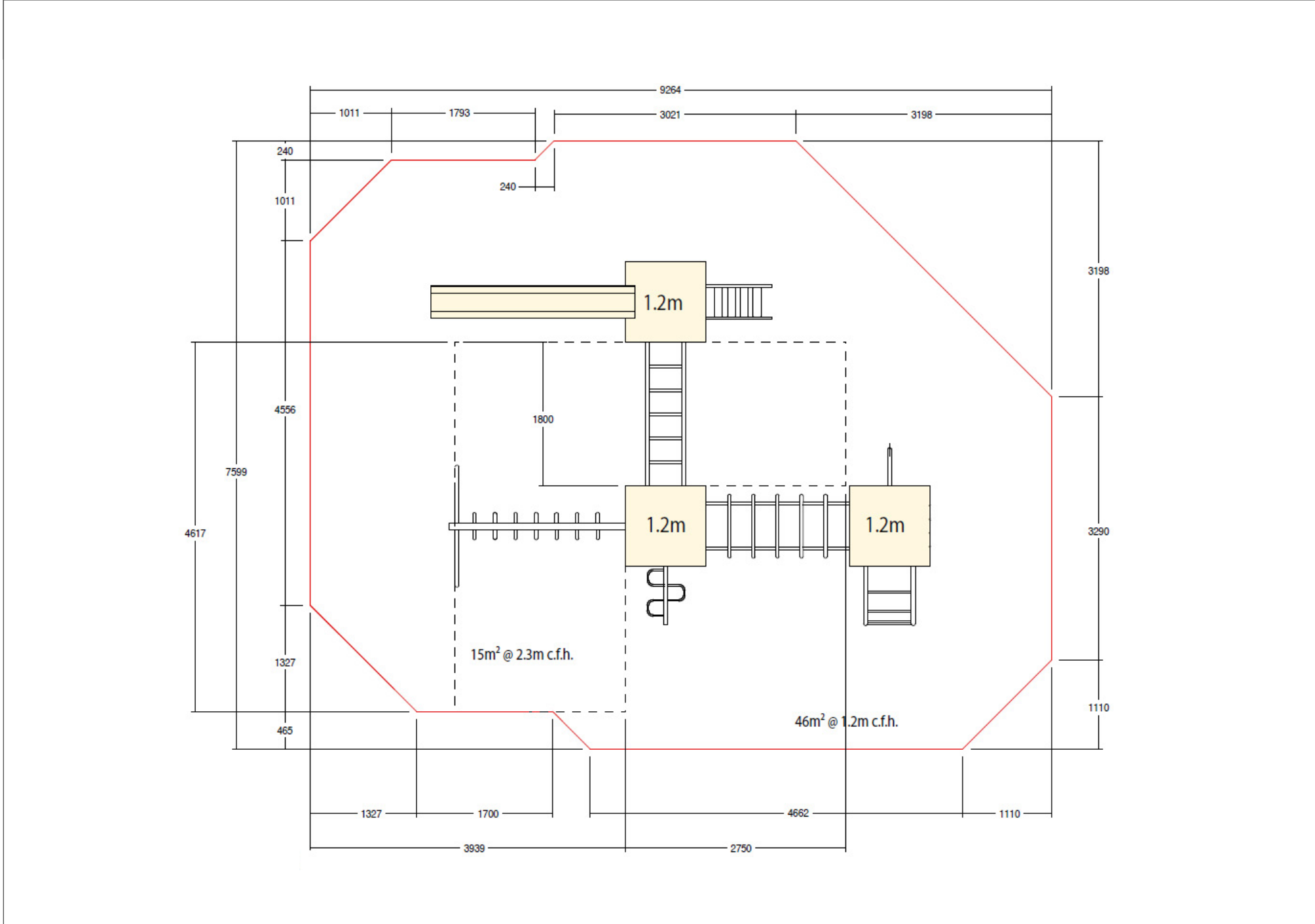
# Play & Leisure Ltd

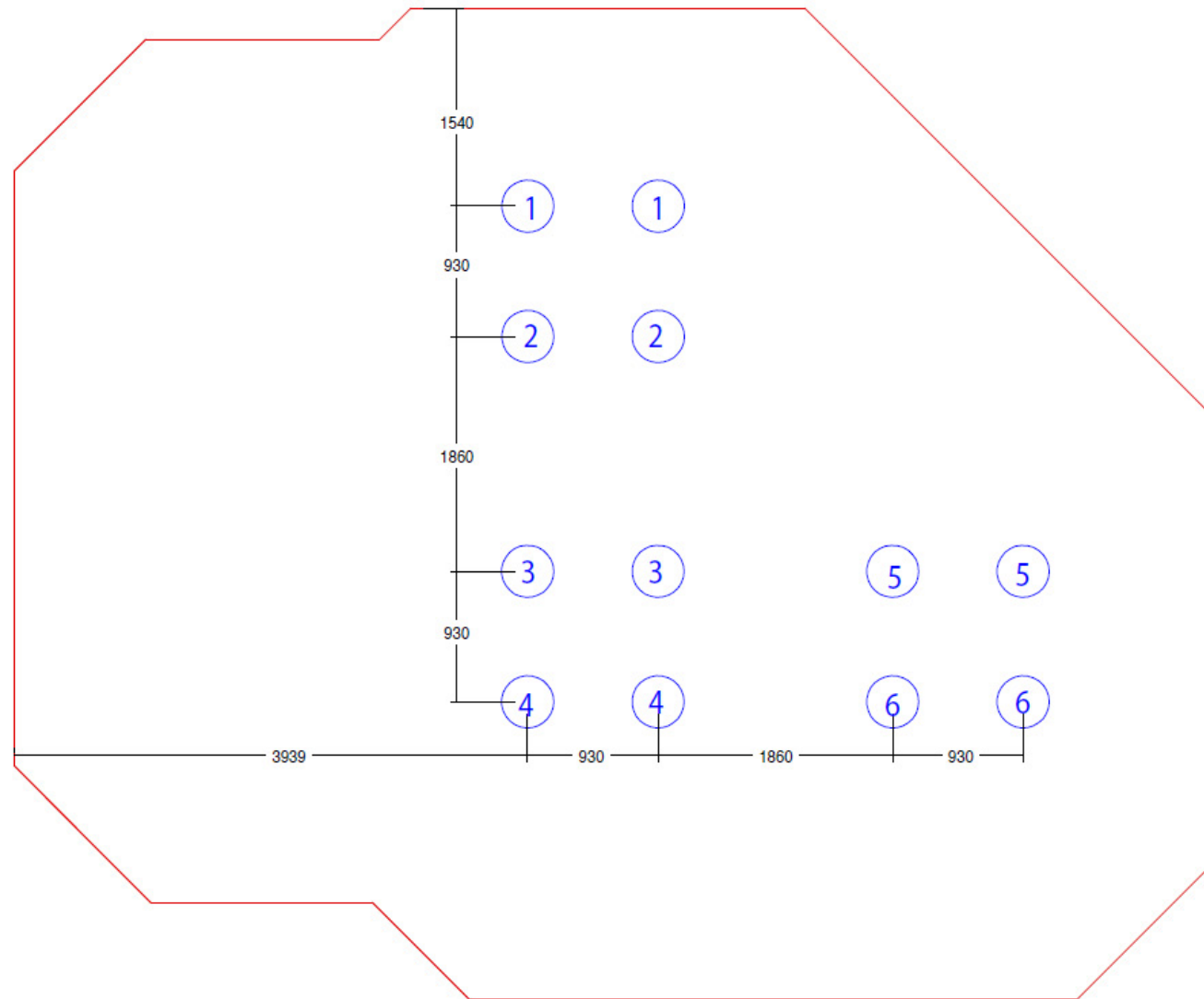
## Installation Details For Skiddaw Mountain multiplay (M108)

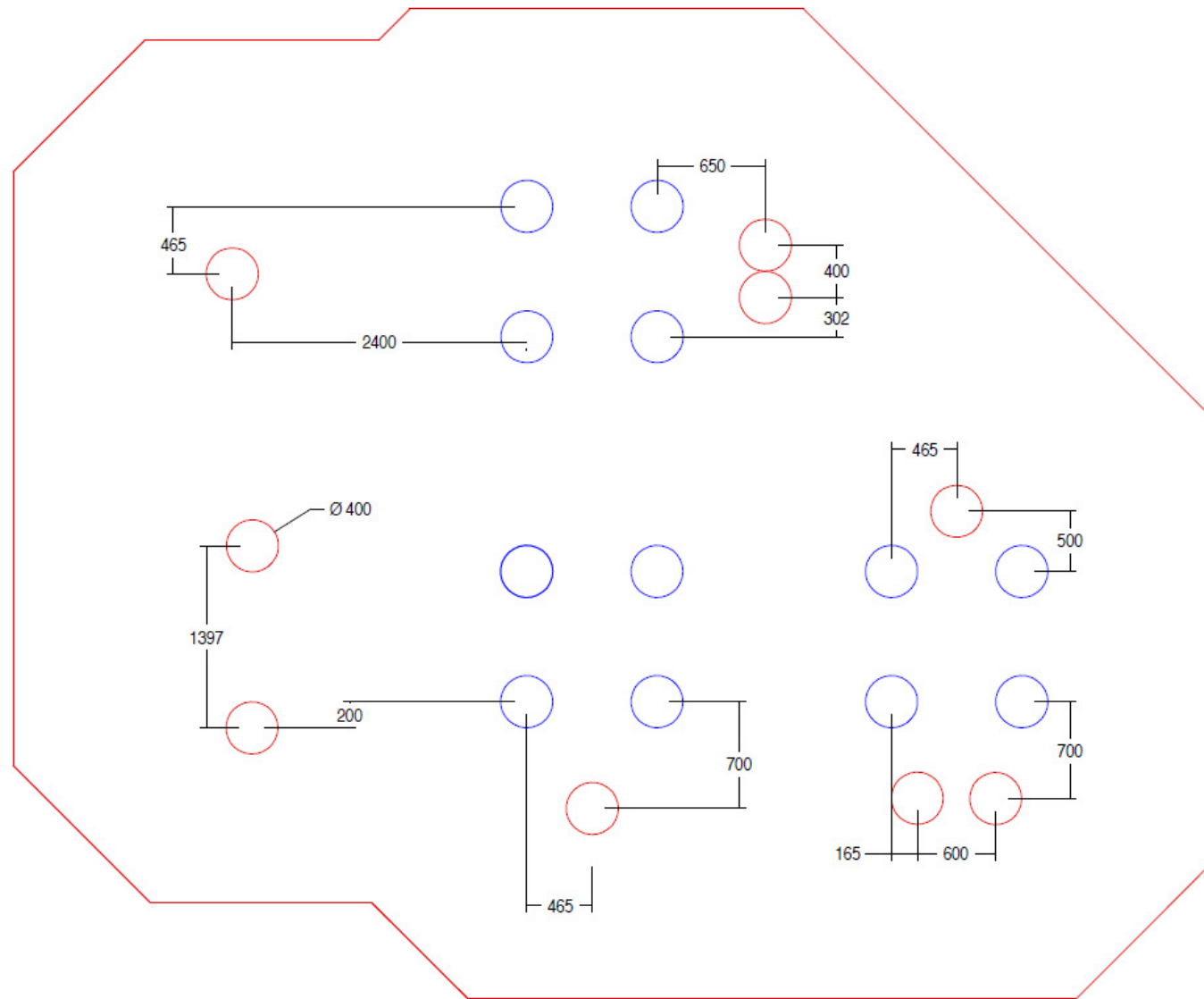
<u>Component List</u>	<u>Quantity</u>
1.2m H sections	6
Square platforms	3
1.2m slide, holder & foot	1
Access Steps	1
Arch Climber	1
Firepole	1
Overhead Ladder	1
Climb Bars	2
Hoop Trapeze	1
Hoop Climber	1
Snake Ladder	1
Chimes Play Panel	1
Hidden Numbers Play Panel	1

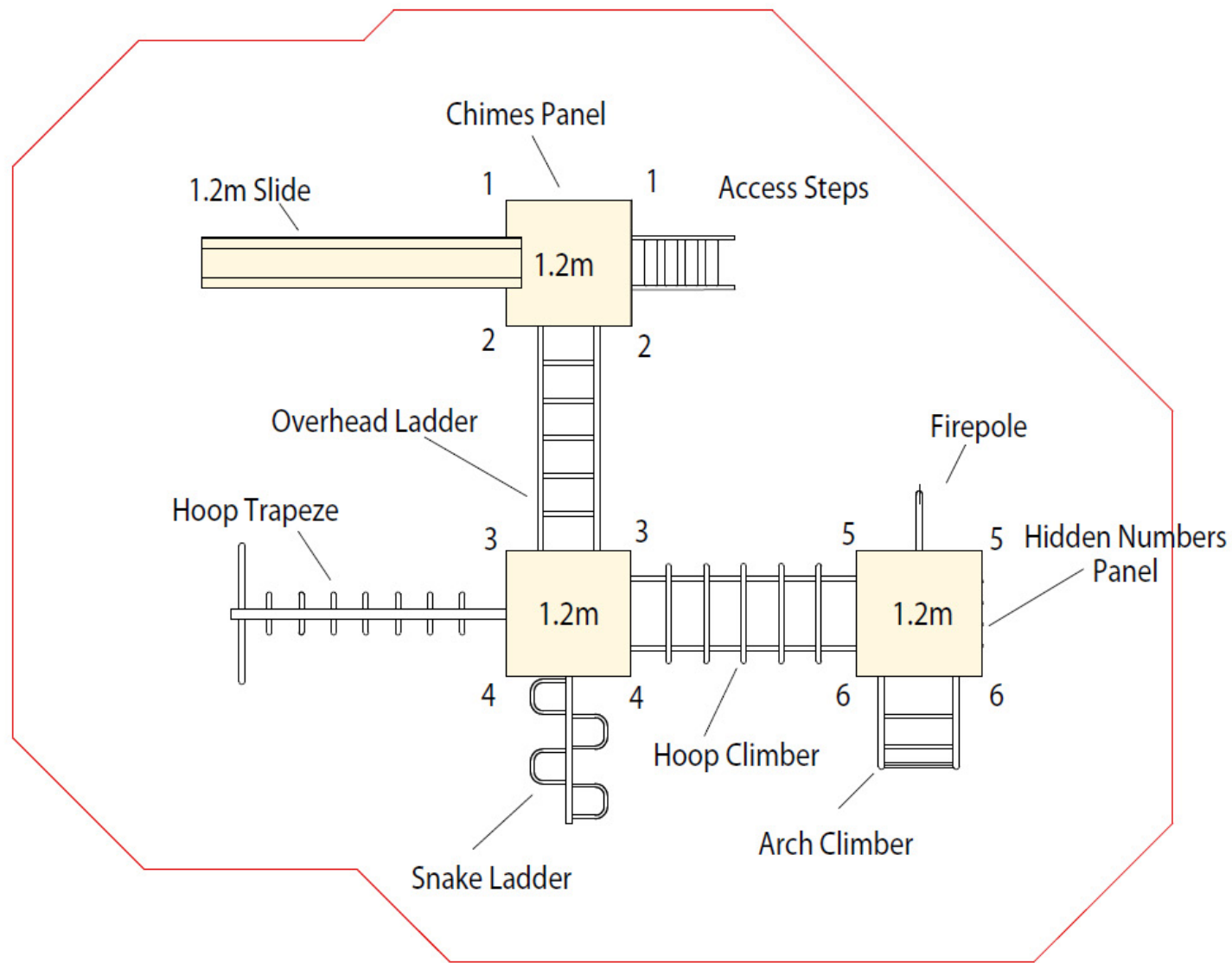
- 1 Construct base as per layout drawing 1 ensuring the correct levels for safety surfacing.
- 2 Excavate 400mm x 400mm holes for H sections as in drawing 2 to a depth of 450mm from finished surfacing level. (All H sections have finished ground level marks)
- 3 Assemble the numbered H sections together in pairs(i.e.1 to 2, 3 to 4 & 5 to 6) with a platform using M10 x 30 resistorx & nylon washers, and place in to the corresponding excavated holes. See drawing 2 for corresponding hole/H numbers. (Tap holes with a 10mm tap and make sure bolts are only hand tight at this stage)
- 4 Connect together using the stated links. i.e. Hoop Climber & Overhead Ladders
- 5 When all H sections and links have been fitted, level in all directions and check distances from edge of surfacing area.
- 6 Mark out for access points as drawing 3 and excavate to a depth of 450 as before (550mm for the slide foot)
- 7 Assemble all other items of equipment as drawing 4 using M10 x 30 resistorx & nylon washers.
- 8 Note. M10 x 25 resistorx are used to connect the slide to the foot
- 9 Connect the panels using M10 x 50 resistorx, steel washers x 2, nyloc & plastic cap sets.
- 10 Once all equipment is fitted check levels again, tighten all bolts and concrete into the ground

**Note: Do not leave unattended until satisfied the concrete has cured or the site is secure**







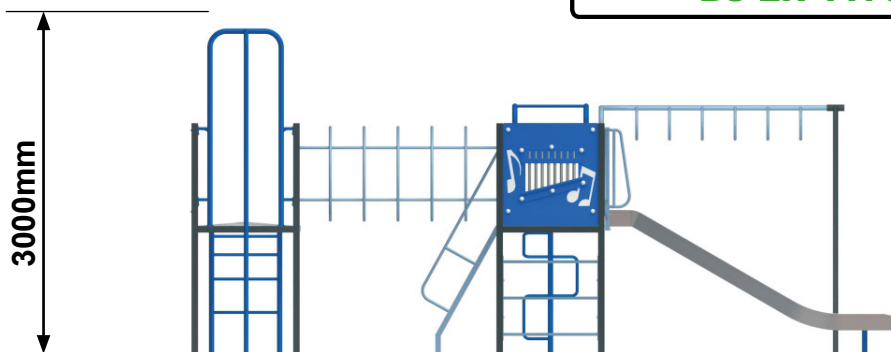




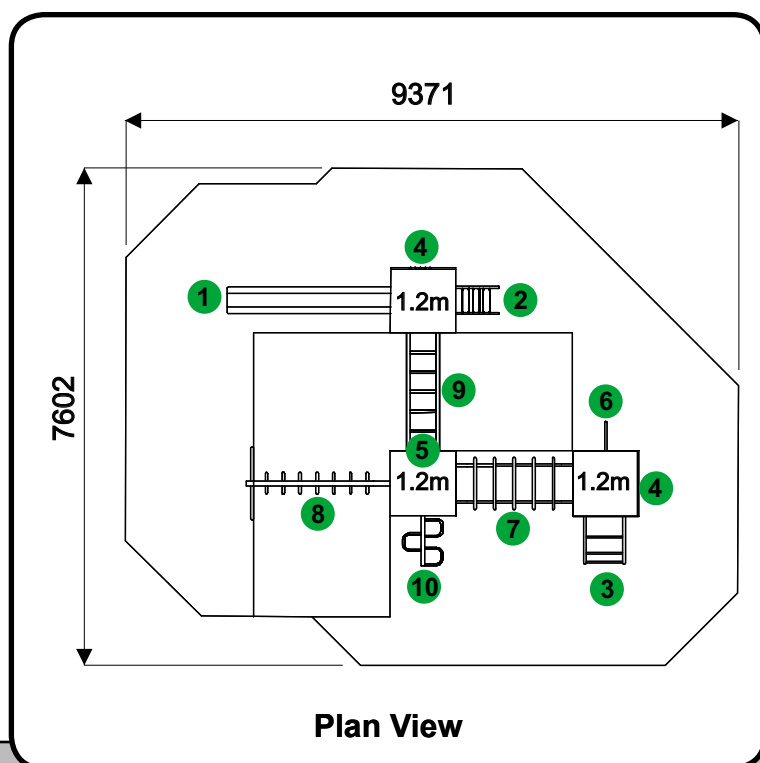
All Play & Leisure's product range is fully compliant with  
**BS EN 1176**

### Features

- 1 Stainless Steel Slide
- 2 Access Steps
- 3 Arch Climber
- 4 Play Panels
- 5 Climb Bars
- 6 Fireman's Pole
- 7 Hoop Climber
- 8 Hoop Trapeze
- 9 Overhead Ladder
- 10 Snake Climber



Side Elevation



Plan View

### Technical Information

#### Product Code

M108

#### Equipment Size (mm)

6275L x 4541W x 3000H

#### Minimum Space (mm)

9371 x 7602

#### Free Height of Fall (mm)

1200 & 2300

#### Safety Surface Area

14m<sup>2</sup> & 47m<sup>2</sup>

#### User Age Range

5-12 Years

# Play & Leisure Ltd

## Maintenance Schedule

### **Maintenance & Inspection**

All Play & Leisure's products should be inspected and maintained in accordance with the recommendations as detailed in BS EN 1176-7:2008

If any part of the equipment is found to be unsafe during an inspection and cannot be immediately rectified the equipment should be protected against further use.

### **Routine Visual Inspection.**

Routine visual inspections are to be conducted to identify obvious hazards resulting from vandalism, use or weather conditions. e.g. Hazards such as broken parts or broken bottles.

### **Operational Inspection.**

To reduce accidents the operator should ensure an appropriate routine maintenance schedule is established, implemented and maintained. Inspection shall be carried out on a monthly basis, although consideration should be taken regarding local conditions and usage.

During a operational inspection the following should be included:

- Tightening of fastenings.
- Re-painting and re-treatment of surfaces.
- Maintenance of any impact attenuating surfaces.
- Lubrication of bearings.
- Marking of equipment to signify loose fill finished surface levels.
- Cleaning.
- Removal of broken glass and other debris or contaminants.
- Restoring loose fills to the correct level.
- Maintenance of free space areas.

### **Annual Main Inspection (NOT EXCEEDING 12 MONTHS)**

Inspection intended to establish the overall level of safety of equipment, foundation and playing surfaces.

- Effects of weather.
- Rotting or corrosion.
- A change in the level of safety of the equipment as a result of repairs made, or of added or replaced components

### **One Post Equipment Maintenance.**

Special attention should be paid to the stability of products being of a one post design.

### **Corrective Maintenance.**

Corrective maintenance should include measures to correct defects, or to establish the necessary levels of safety of the playground equipment and surfaces. Such measures should include:

- Replacement of fastenings.
- Welding or welding repairs.
- Replacement of worn or defective parts.
- Replacement of defective structural components.

### **Equipment Alterations.**

Alterations to parts of any products that could affect the essential safety of the equipment should only be carried out after consultation with Play and Leisure.

### **Equipment Identification**

Information regarding the manufacturer, I.D. Number, year of manufacturer and the European Standard is displayed on an identification plaque.